

An Opportunity to Save an Important Ecosystem... two fabulous properties on Upper Gananoque River



Frontenac Arch Natural Area

The Frontenac Arch is a corridor of Precambrian Shield that connects the Algonquin Highlands of Eastern Ontario with the Adirondack Mountains of New York State. The Arch is characterized by rugged granite and marble ridges, often heavily forested, alternating with deep valleys. This rugged landscape cradles many lakes and a diverse system of wetlands,

swamps, marshes, beaver ponds and bogs. The Arch is an area of significant ecological overlap between southern forests and northern boreal and mixed forest systems. As a result, this is one of the most biologically diverse areas in Canada, particularly rich in bird, reptile and plant species.

In 2002 the United Nations Education, Scientific, and Cultural Organization (UNESCO) designated a significant portion of the Arch as the UNESCO Frontenac Arch Biosphere, one of only sixteen biospheres in Canada.

The Crank

This 150 acre property has nearly 3.8 km of shoreline on both sides of the Gananoque River at a bend in the river known as *The Crank*. It features a wide diversity of habitats—exposed rock shorelines, marshes and wetlands, bare rock ridges, and mature mixed upland and lowland deciduous forests. The Gananoque River is an important part of the Frontenac Arch Paddle Trail, a 3000-year trade route that connects the Rideau system with the St. Lawrence. The property will be owned and managed by the Nature Conservancy of Canada (NCC).

The Summerfield Tract

The 223 acre Summerfield Tract becomes part of Ontario Nature's Lost Bay Nature Reserve and is bordered by lands owned by Ministry of Natural Resources. An expanded Reserve protects provincially significant wetlands along the shoreline at the bottom of Lost Bay on the Gananoque River and connects with the Wiltse Creek Marsh to the south, and Killenbeck and Charleston Lakes to the north. Connectivity on this scale and of such high quality is exceptional. The property contains and connects extensive wetlands and species at risk habitat. At least nine species-at-risk including Blanding's and snapping turtles and the eastern rat snake inhabit this area.



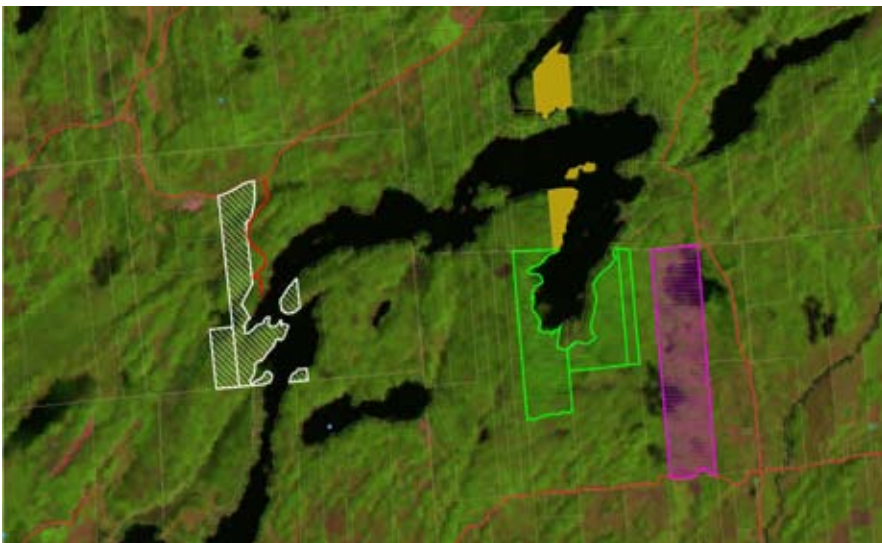
An Invitation to Preserve The Crank and Summerfield Tract on Gananoque River



Just as was done with the successful purchase of the Sheffield property in 2010, partners are fundraising to preserve special places. The Nature Conservancy of Canada and Ontario Nature are

able to match private donations with funds from an innovative conservation program designed in partnership with the federal government. Thanks to this, the partners have managed to raise all but \$168,000—necessary to secure the government funding. The total cost of the two properties is \$765,000

The local partners have organized a public campaign to raise the remaining \$168,000 and we have managed to raise over half of that amount to date. We need to raise \$80,000 before the campaign closes on December 31st, 2011.



- Summerfield Tract
- The Crank
- Ontario Nature Lost Bay
- Crown Land

Campaign Target

Total Project Costs	\$765,000
Local Fundraising Goal	\$168,000
Funds still needed	\$ 80,000

Donations may be made in a variety of ways: by cheque, stock transfer or credit. Please make cheques payable to “Thousand Islands Watershed Land Trust (TIWLT)” and send to 19 Reynolds Road, Lansdowne, Ontario K0E 1L0. Write “Frontenac Arch Natural Area” on the cheque or in a note. Please note that the 2006 Federal Budget eliminated capital gains tax from gifts of publicly listed securities to registered charities.

Arrangements have been made for American donors to receive an American tax receipt. For more information, please contact the TIWLT at dann@tiwlt.ca or call 613 359 9972.

Your help would be very much appreciated. The total acquisition covers 400 acres. If 400 people contributed \$200 each, we would meet our target. A private donor will match up to \$10,000.

You Can Help!

For further contribution information contact:

Thousand Islands Watershed Land Trust: www.tiwlt.ca 613 359 9972 Dann Michols

Frontenac Arch Biosphere Network www.fabn.ca 613-659-4824 Don Ross

Leeds-Grenville County Stewardship Council: www.ontariostewardship.org/councils/leeds Martin Streit

Algonquin to Adirondacks Conservation Association www.a2alink.org Cameron Smith

Gananoque River Waterways Association www.grwa.ca Bonnie Mabee